

LIBYA - Al Khali Power Plant Project (HFO) - 2018

Supply of special steel plates for tank

Hot rolled HEAVY PLATES in grade S275JR+AR - MTC 3.1 - Thickn. Tolerance EN 10029 CLASS C.

Bottom plates delivered as mill edges, Shell and Roof plate to be cut to the requested size in rectangular shape by CNC cutting machine to obtain exact square shape (no nozzle holes), trimming, welding preparation for all edges "X" and "V" and bending according to your drawings no. 304-307_1-V0002 and 304-307_2-V-0002.

9x1820x7960 mm (instead of 8 mm) - Roof plate - (Type 1)

9x1800x7938 mm - (Type 7)

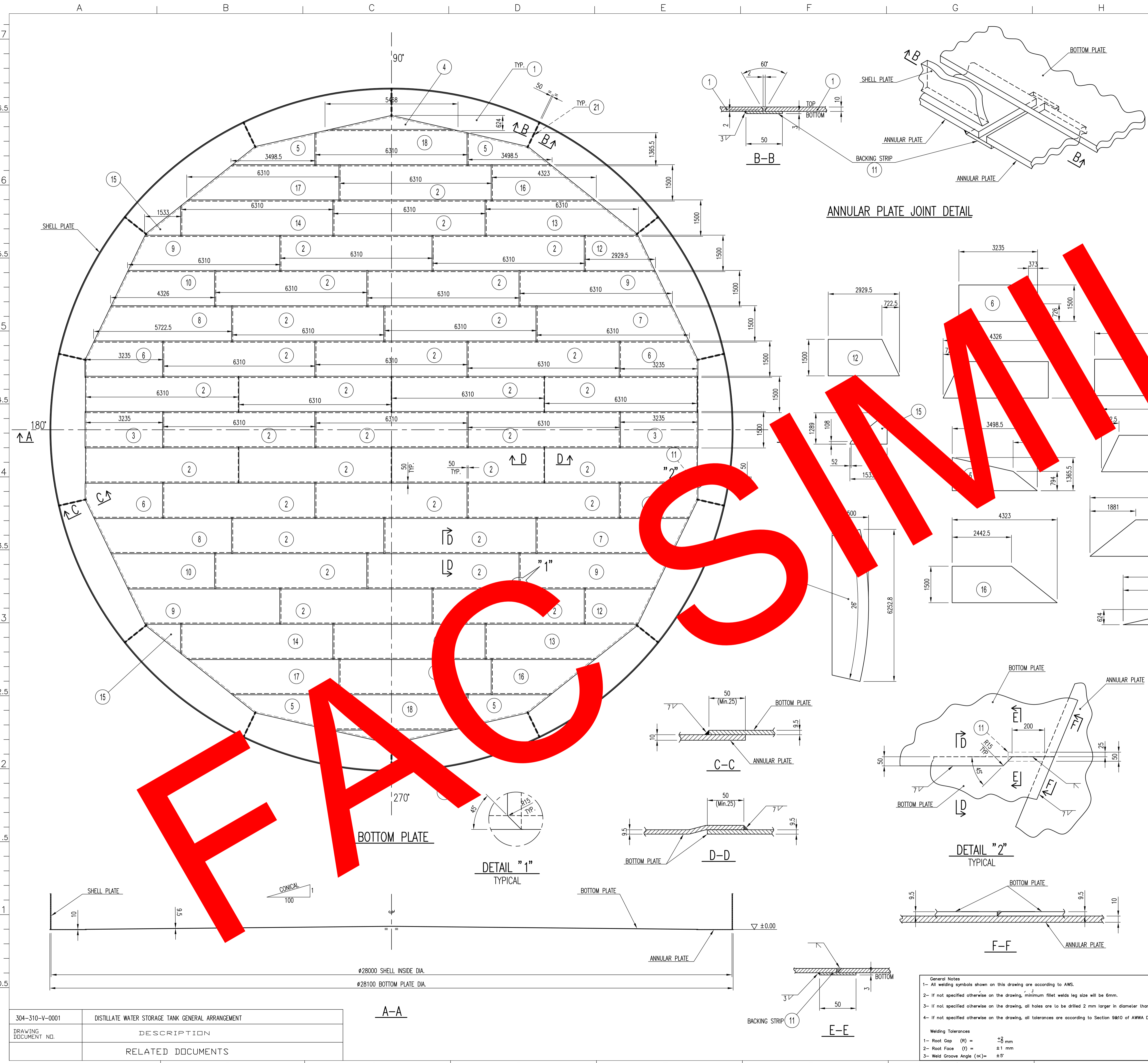
9x2000x8000 mm - Bottom Plate (Type 2)

11,5x1800x7938,5 mm (Type 6)

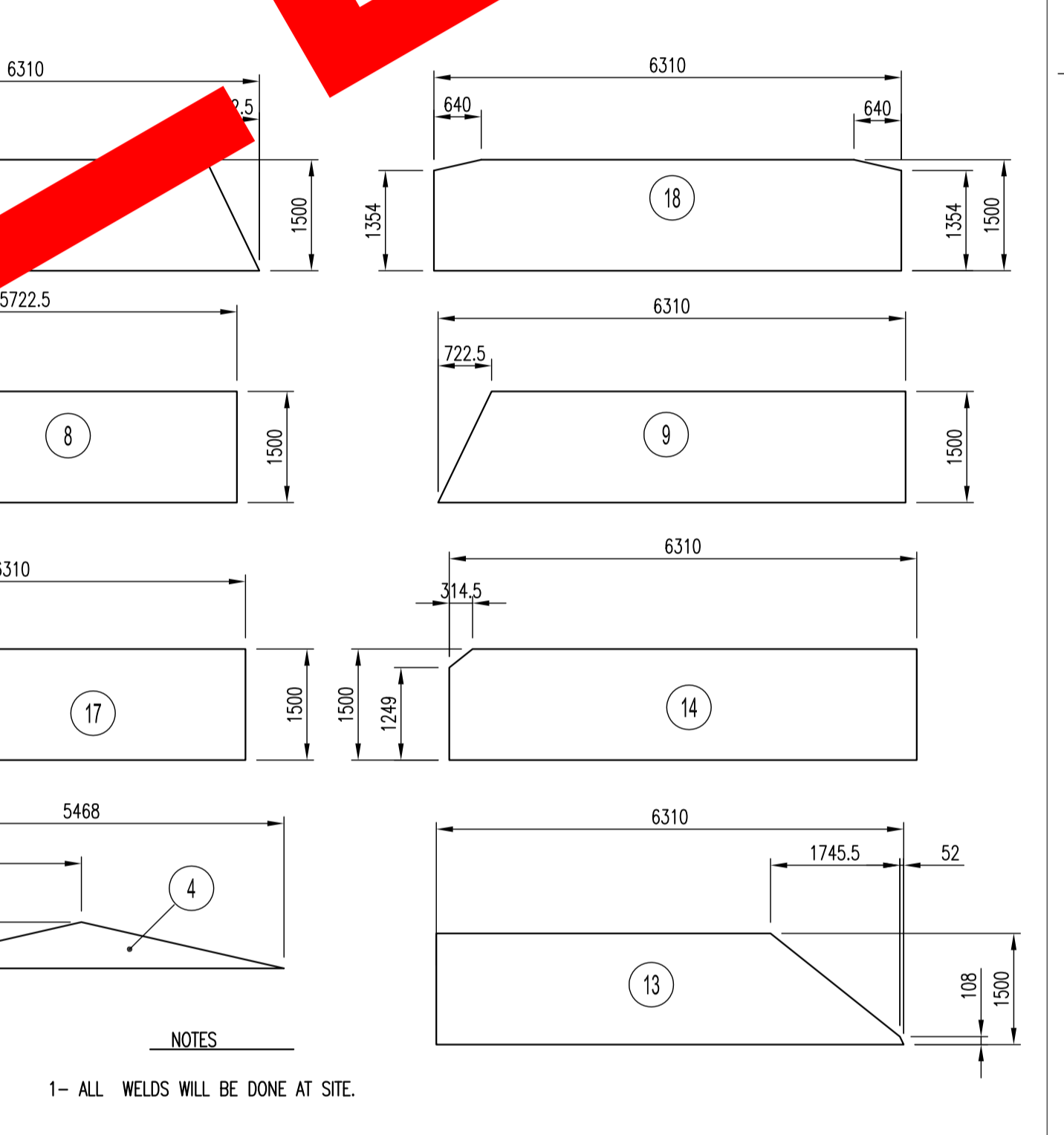
16x1800x7939 mm (Type 4)

18,5x1800x7939,5 mm (Type3)





PART LIST						
Part No.	Part Name	Piece	Material	Unit Weight Kg.	Total Weight Kg.	Note
1	PL 1500x10	6252.8	S235JR	655.3	9174.5	
2	PL 1500x9.5	6310	S235JR	705.8	23291.4	
3	PL 1500x9.5	3235	S235JR	361.9	723.8	
4	PL 624x9.5	5468	S235JR	127.3	254.5	
5	PL 1365x9.5	3498.5	S235JR	231	924	
6	PL 1500x9.5	3235	S235JR	361.9	1447.6	
7	PL 1500x9.5	6310	S235JR	666	1331	
8	PL 1500x9.5	5722.5	S235JR	600	1200	
9	PL 1500x9.5	6310	S235JR	665	2662	
10	PL 1500x9.5	6310	S235JR	443.5	887	
11	PL 50x3	LENGTH	S235JR	30.6	30.6	
12	PL 1500x9.5	2929.5	S235JR	287.3	574.6	
13	PL 1500x9.5	6310	S235JR	609	1219	
14	PL 1500x9.5	6310	S235JR	700	1400	
15	PL 1500x9.5	1533	S235JR	77.4	155	
16	PL 1500x9.5	4323	S235JR	378.4	756.8	
17	PL 1500x9.5	6310	S235JR	600.5	1201	
18	PL 1500x9.5	6310	S235JR	692	1384	
Co.No. 1				Carry Over	48617.3	
				Weight Kg.	48617.3	



ISSUED FOR CONSTRUCTION

TITLE	
9-WR-MT-001 DISTILLATE WATER STORAGE TANK BOTTOM PLATE DETAIL	



304-310-V-0001	DISTILLATE WATER STORAGE TANK GENERAL ARRANGEMENT
DRAWING DOCUMENT NO.	DESCRIPTION
	RELATED DOCUMENTS

- General Notes
- All welding symbols shown on this drawing are according to AWS.
 - If not specified otherwise on the drawing, minimum fillet welds leg size will be 6mm.
 - If not specified otherwise on the drawing, all holes are to be drilled 2 mm larger in diameter than bolt.
 - If not specified otherwise on the drawing, all tolerances are according to Section 9&10 of AWS A D100.
- Welding Tolerances
- Root Gap (R) = ±0.5 mm
 - Root Face (f) = ±1 mm
 - Weld Groove Angle (α) = ±5°